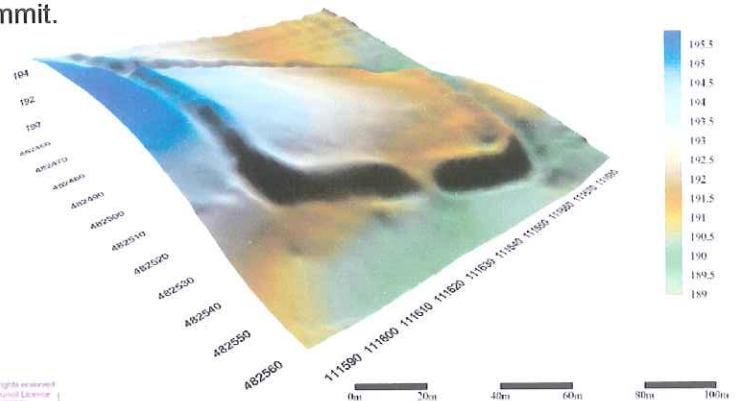


West Dean Archaeological Project Bow Hill Camp: Survey and Excavation

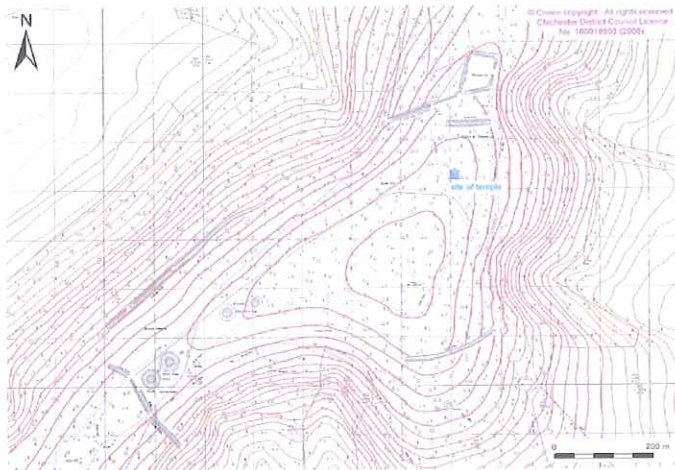


Aerial photograph of Bow Hill Camp and the western edge of the Chilgrove Valley.

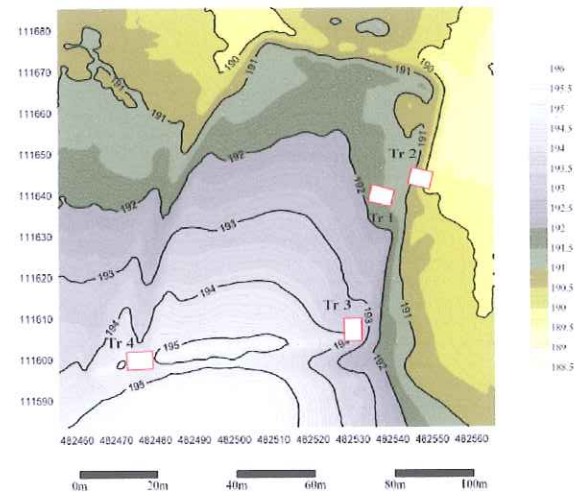
Bow Hill Camp is a scheduled ancient monument. It is a sub-rectangular, single entrance enclosure built on the crest of Bow Hill between Goosehill Camp and the Devil's Humps. The camp was surveyed in the summer of 2009 and excavations began in May 2010, as part of the Institute of Archaeology's collaboration with the West Dean Estate. Finds from the excavation show that the camp was built in the Late Bronze Age c. 800BC. The lack of domestic finds recovered to date suggests that it was not a residential site but was subject to periodic occupation perhaps related to ritual use of the Bow Hill summit.



Digital terrain model of Bow Hill Camp.



Plan showing the monuments on and around the summit of Bow Hill.



Contour plan showing the location of the excavation trenches.



Excavation of the northern ditch terminus.



The meeting of the ditches at the SW corner of the enclosure.